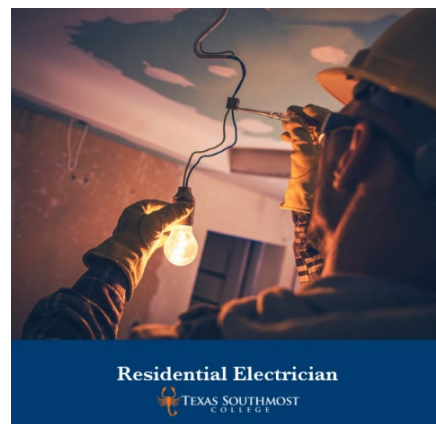


A certificate in Electrician Technology will prepare students for entry level positions in an electrician career. It also provides hands-on instruction in all aspects of maintenance, operations, troubleshooting and repair of circuits.

Recommended Course Sequence

Courses	Credits	Suggested Semester
ELPT 1321 Introduction to Electrical Safety and Tools	3	Fall
ELTN 1391 Special Topics in Electrician	3	Fall
ELPT 1329 Residential Wiring	3	Fall
ELPT 1325 National Electrical Code I	3	Fall
ELPT 1345 Commercial Wiring	3	Spring
ELPT 1320 Fundamentals of Electricity II	3	Spring
ELPT 1315 Electrical Calculations I	3	Spring
ELTN 1343 Electrical Troubleshooting	3	Spring
Total Credit Hours for Graduation	24	



Check course core designation at the [Class Availability website](#).

This information is provided as an example only. You will develop a personalized plan with your Success Coach and faculty advisor/mentor that reflects your goals and interests. You are required to meet with an advisor each semester to ensure you are on track for graduation. This document does not contain all the information you need to stay on track for graduation.

Program Student Learning Outcomes

Program Student Learning Outcomes (PSLO) are statements that specify what students will know, be able to do or be able to demonstrate when they have completed the program.

A certificate in Electrician Technology will prepare students for entry level positions in an electrician career. It also provides hands-on instruction in all aspects of maintenance, operations, troubleshooting and repair of circuits.

1. Demonstrate ability to understand requirements of the National Electrical Code in all wiring installations.
2. Understand and apply knowledge in layout, assembly, installation, and troubleshooting of fixtures, devices, services, heating systems, pumps, motors, and motor controls used in residential, commercial, and some industrial locations.
3. Understand and apply knowledge of electrical theory and techniques of the trade, including blueprint reading, wiring, pipe bending, motor control, switching, power circuits and lockout/tag out procedures.

A minimum grade of "C" must be obtained in each ELPT and ELTN course required in the certificate plan.